

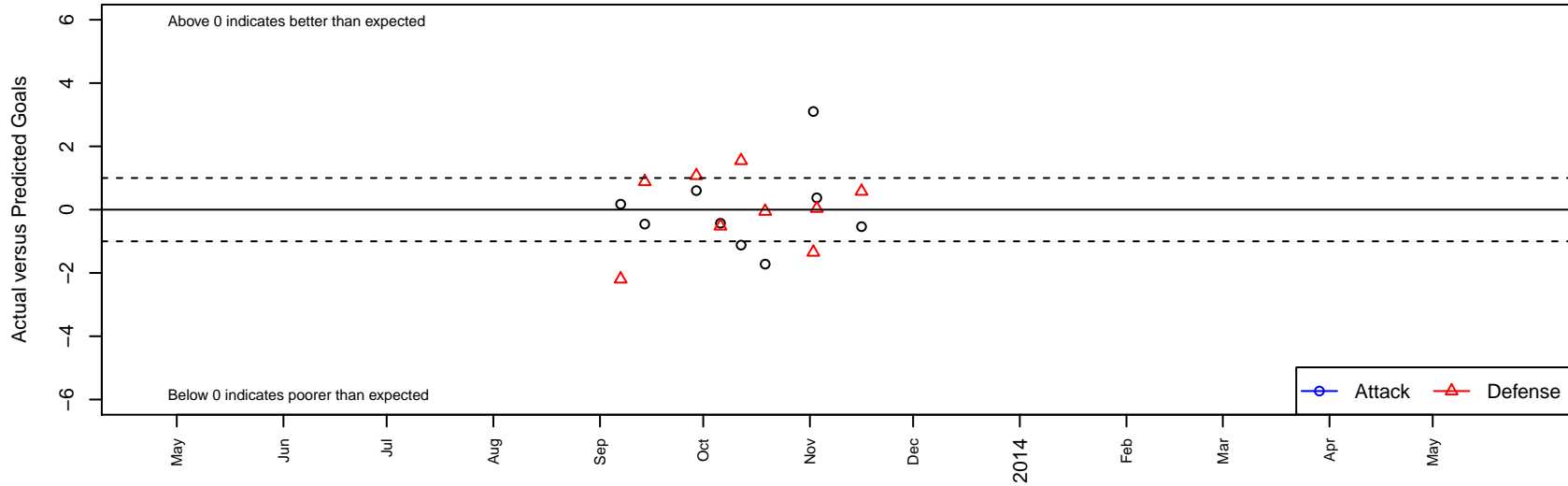
GSC Gryphons Red G99

, CAN
 G99 total strength=1365
 attack=14.3 defense=3.52
 fall league = NorCal NPL P1 State Premier 1 U
 alt names used:
 GRYPHONS 99G RED

Venues played:
 NorCal NPL P1 State Premier 1 U14



GSC Gryphons Red G99
 Dots are actual minus expected GF (blue circles) and GA (red triangles).
 Blue line is smoothed change in attack strength. Red is smoothed change in defense strength.



	date	home		away		venue	pred.home	pred.away
15383	2013-11-16	Diablo FC G99	3	GSC Gryphons Red G99	1	NorCal NPL P1 State Premier 1 U14	3.58	1.54
15170	2013-11-03	GSC Gryphons Red G99	1	Santa Clara Sporting Green G99	4	NorCal NPL P1 State Premier 1 U14	0.63	4.04
15054	2013-11-02	EDYSL Impact Gold G99	4	GSC Gryphons Red G99	6	NorCal NPL P1 State Premier 1 U14	2.65	2.90
14671	2013-10-19	GSC Gryphons Red G99	0	MVLA Monsoon Blue G99	2	NorCal NPL P1 State Premier 1 U14	1.72	1.94
14458	2013-10-12	GSC Gryphons Red G99	0	Placer United 00 Red G99	3	NorCal NPL P1 State Premier 1 U14	1.12	4.55
14380	2013-10-06	Marin FC Blue G99	2	GSC Gryphons Red G99	1	NorCal NPL P1 State Premier 1 U14	1.48	1.43
14149	2013-09-29	Walnut Creek Storm G99	0	GSC Gryphons Red G99	2	NorCal NPL P1 State Premier 1 U14	1.07	1.40
13585	2013-09-14	GSC Gryphons Red G99	1	De Anza Force ECNL G99	4	NorCal NPL P1 State Premier 1 U14	1.46	4.88
13371	2013-09-07	Davis Legacy Millennium G99	7	GSC Gryphons Red G99	1	NorCal NPL P1 State Premier 1 U14	4.81	0.83